

AC 28 Library Update 2

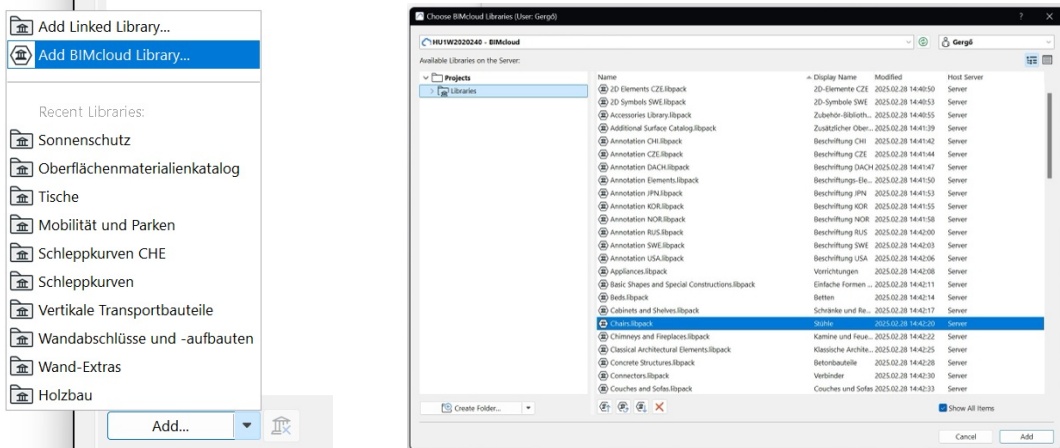
Release Note

Table of Contents

1. Dependency Handling of Library Packages on BIMcloud Server	2
2. Multi-Selection Possibility on BIMcloud Libraries Dialog.....	3
3. MVO Detail Level Override	4
3.1. Doors.....	4
3.2. Windows	5
3.3. Skylight.....	6
4. Library Package Name Localization.....	8
5. JPN bug fixes	9
6. List of Modified Packages.....	9
6.1 New features.....	9
6.2. Bugfixes, small changes	9
6.3. Only translation and localization changes	9

1. Dependency Handling of Library Packages on BIMcloud Server

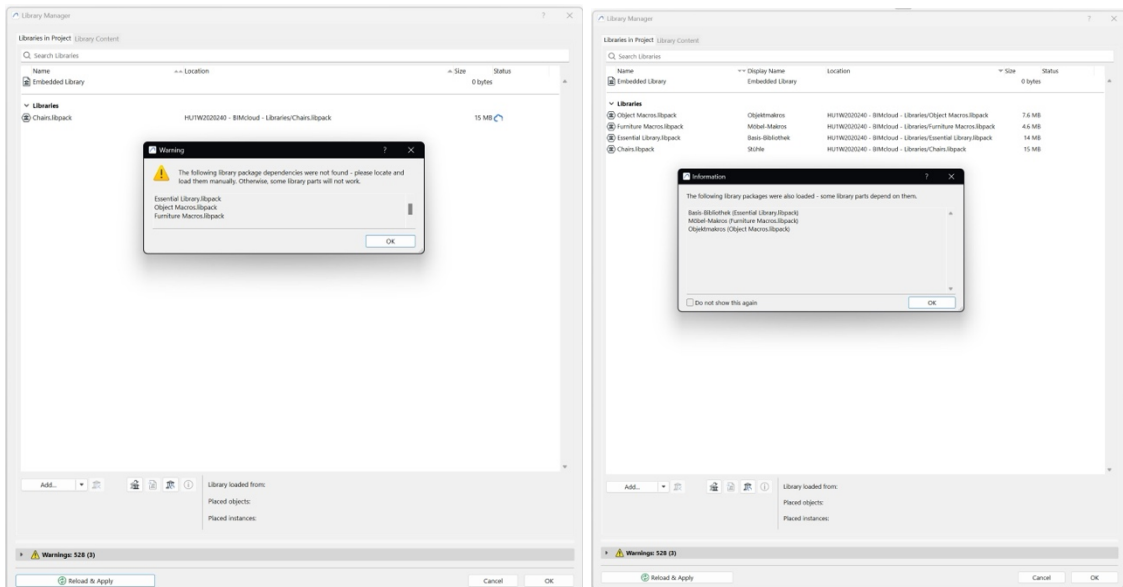
Until Archicad 28 Update 1 when users were adding library to a project from BIMcloud



and a library package dependency was missing, users had to locate and upload it manually. Now, library package dependencies are uploaded automatically. A pop-up window briefly informs users which additional packages were added.

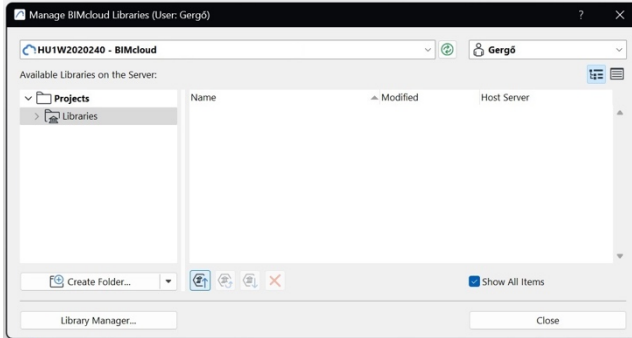
Before:

After:



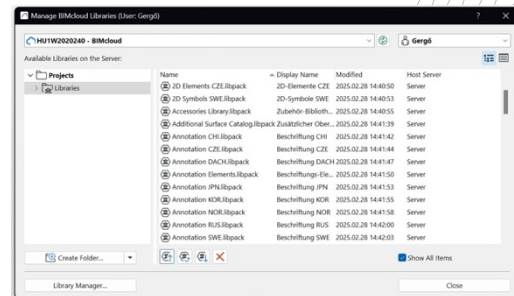
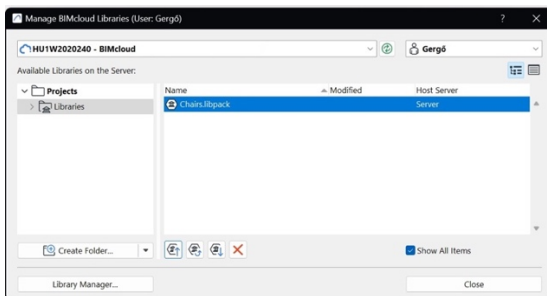
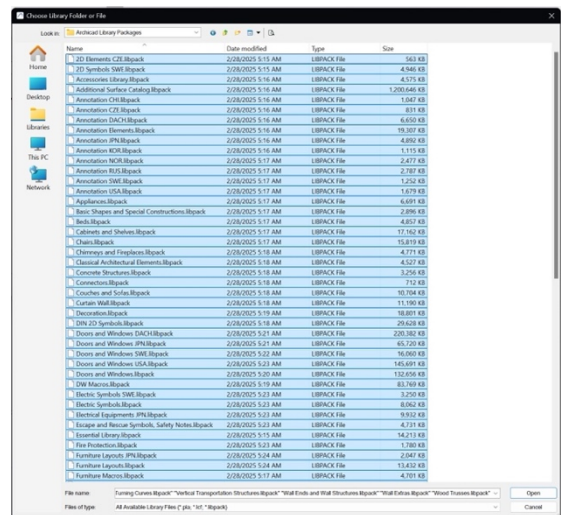
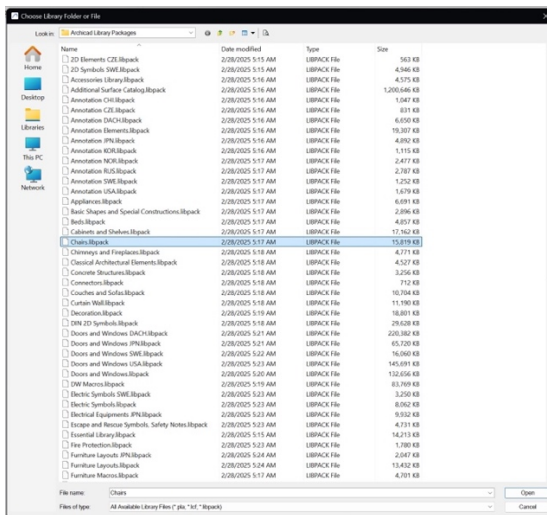
2. Multi-Selection Possibility on BIMcloud Libraries Dialog

Starting with Archicad 28 Update 1 users have multi-selection possibility when uploading library packages to BIMcloud.



Before:

After:



3. MVO Detail Level Override

In Archicad 28 Library Update 2 the Detail Level Override in Door, Window, and Skylight Tool Settings has been restored.

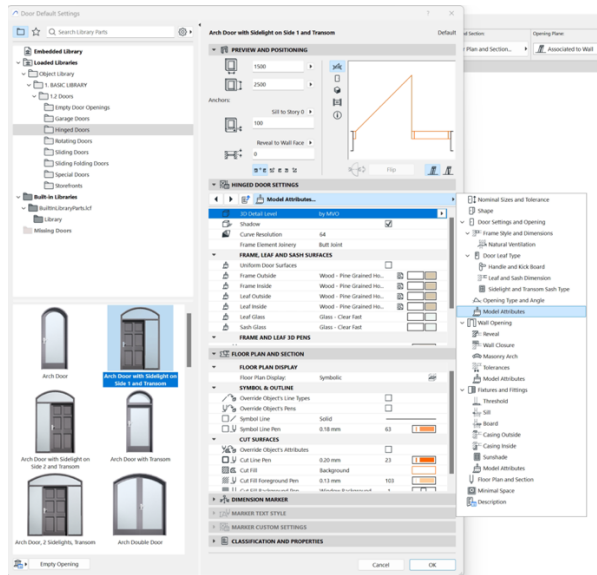
You will be able to find

- 2D detail level settings on the Floor Plan and Section tabpages and
- 3D detail level settings on the Model Attributes tabpages

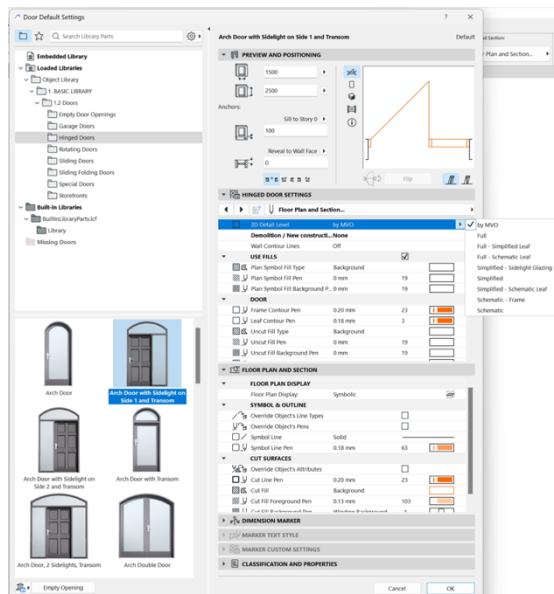
In case there is more than one Model attributes, the 3d detail level is shown on each.

3.1. Doors

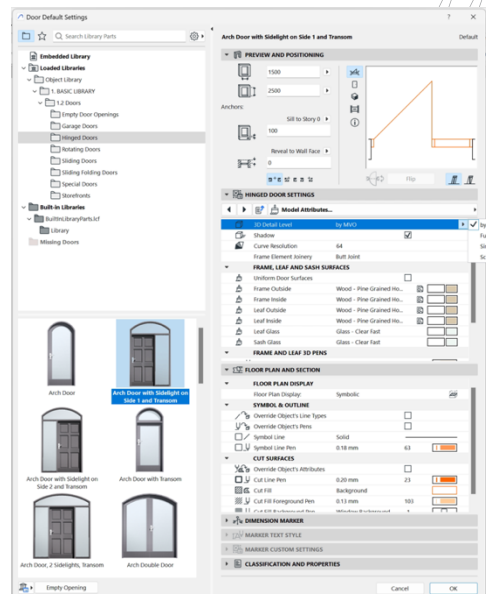
Door Settings



2D Detail Level

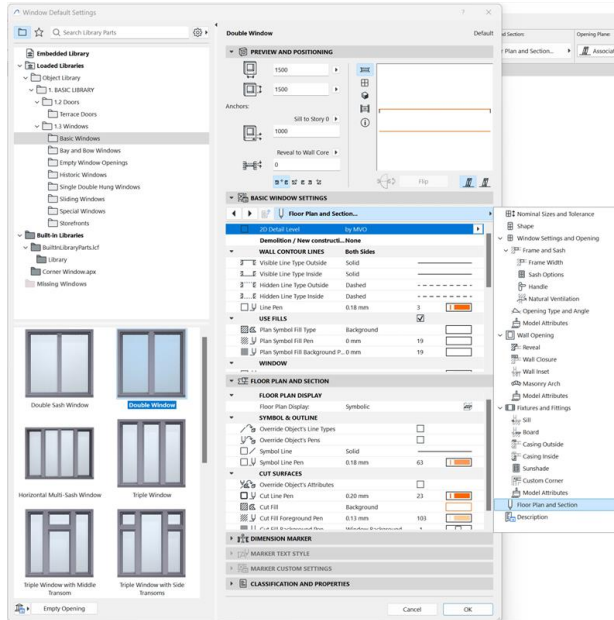


3D Detail Level

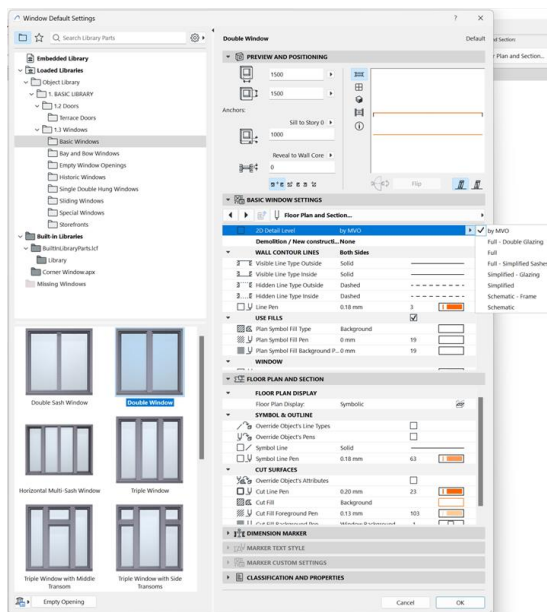


3.2. Windows

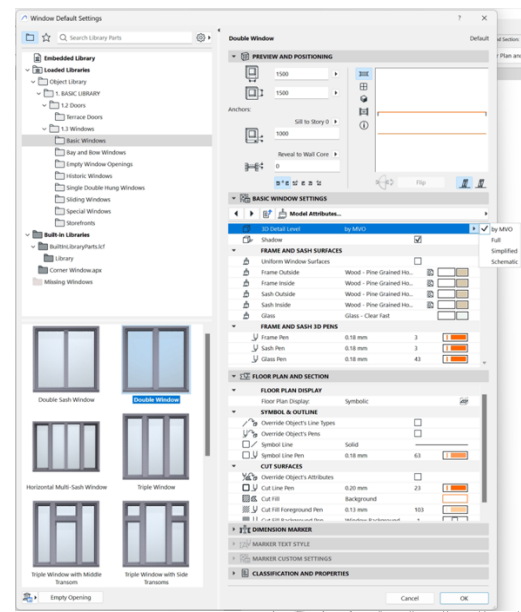
Window Settings



2D Detail Level

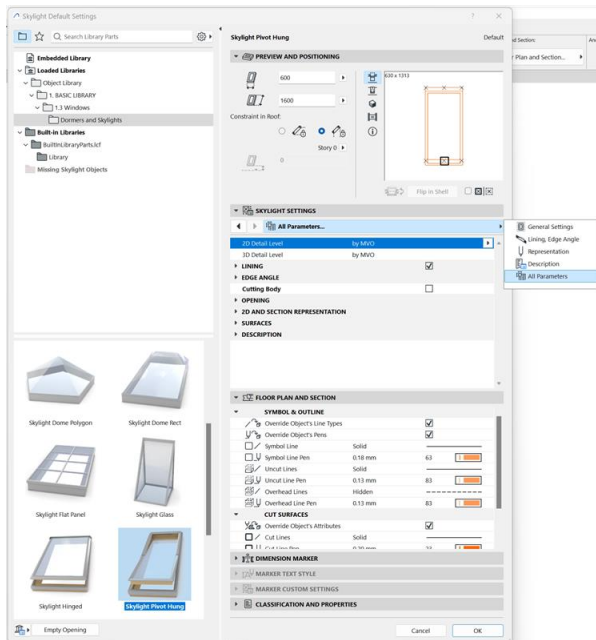


3D Detail Level

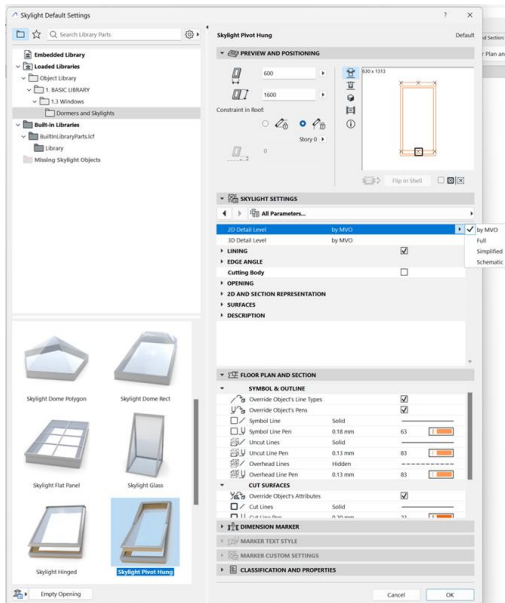


3.3. Skylight

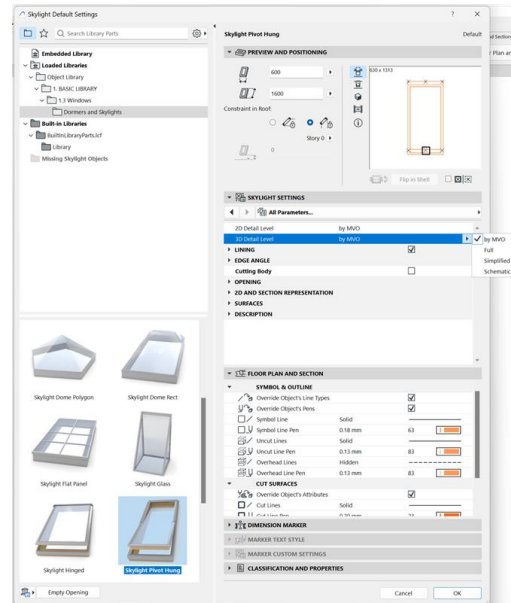
Skylight Settings



2D Detail Level

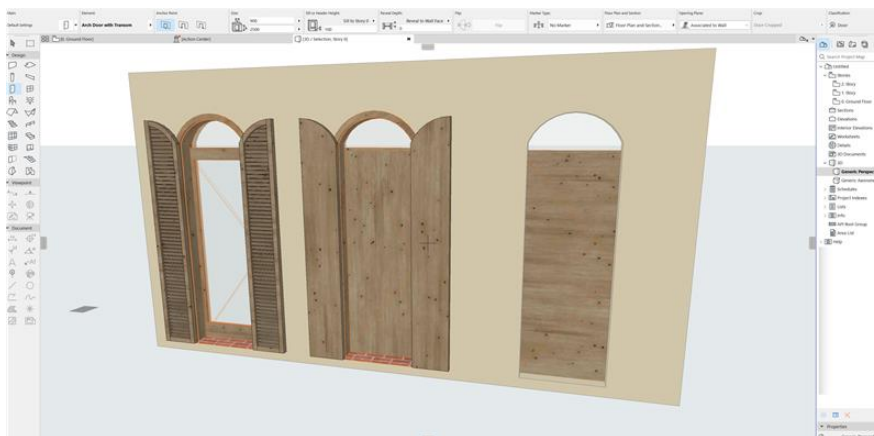
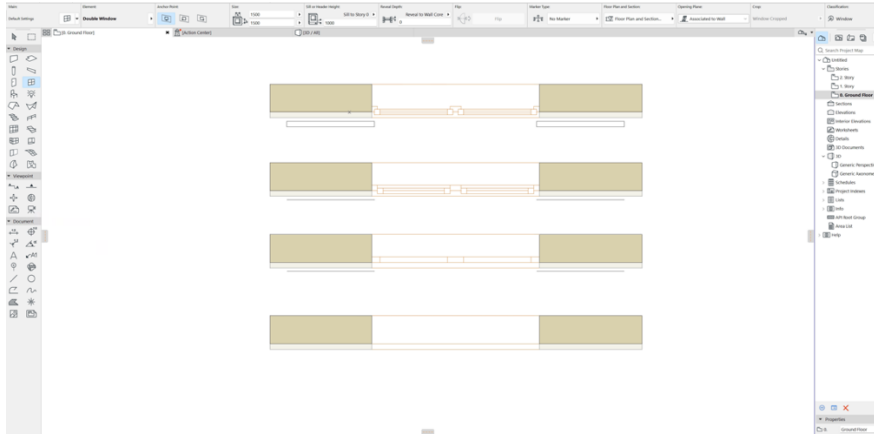


3D Detail Level

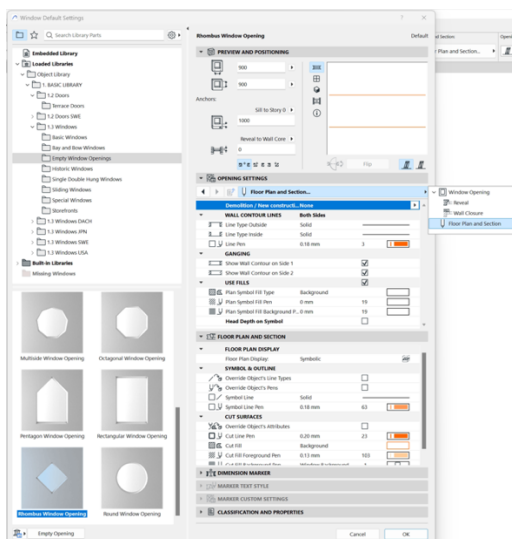


Starting with Library Update 2, it is now possible to set detail levels independently of the MVO. However, the visibility of components still depends on the MVO settings. Component examples include: sunshade, casing, sill board, reveal, threshold, mounting, lintel.

For example, if the 2D detail level in the MVO is set to Schematic, the sunshade will be turned off. In this case, it will also be turned off in windows where we have overridden it to full, because MVO settings affecting components apply to all openings.



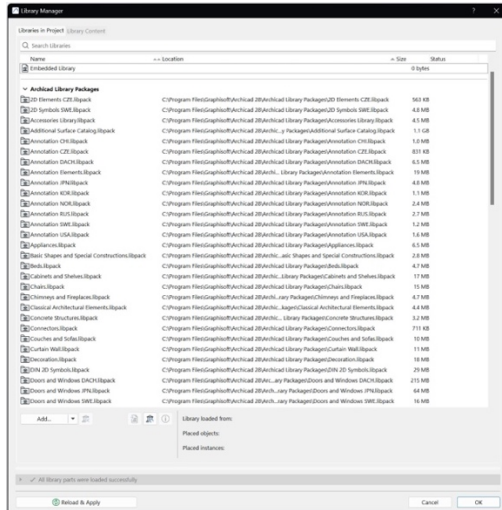
Please note, that just like before, there are some exceptions. Certain elements cannot be overridden in 2D and 3D because they are simple objects with no related attributes (e.g., Rhombus Window Opening). These objects do not have the override function available on their tab pages.



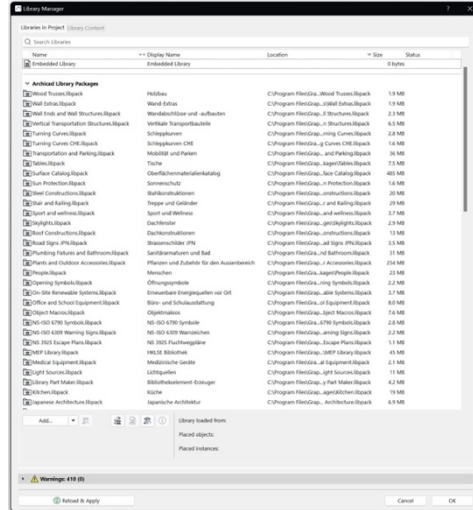
4. Library Package Name Localization

Archicad 28 Update 1 introduces display names for library packages, allowing package names to be shown in the preferred language, not just in English. (Here, on the example, it is in German.)

Before:

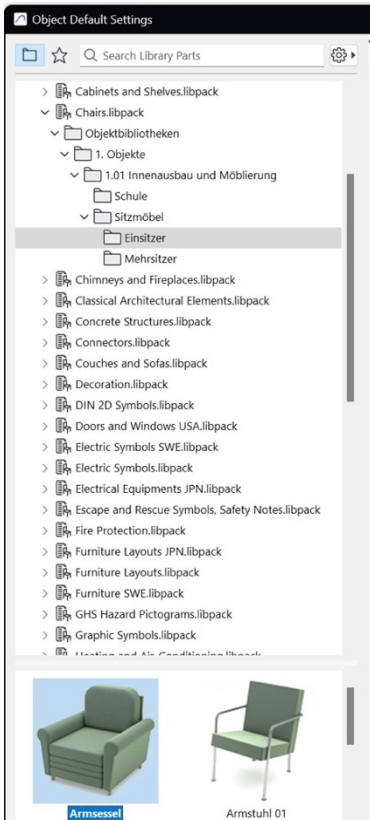


After:

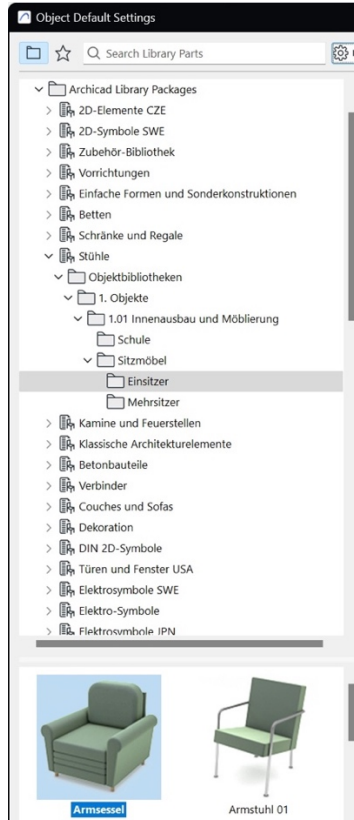


After the update Object Default Settings also uses the display name in the preferred language. (Here, on the example, it is in German.)

Before:



After:



5. JPN bug fixes

DEF-22675

Outset door : There was an inconsistency between the specified values for the upper track width, the gap in the sliding section, and the actual movement values.

DEF-22878

When the door panel was changed to a frame and set to detailed display in the elevation and section views, the frame's line segments were not displayed.

6. List of Modified Packages

6.1 New features

- Localized LibPack Names
 - All Packages
- Door, Window and Skylight Detail Level Override
 - Doors and Windows
 - Doors and Windows SWE
 - Doors and Windows DACH
 - Doors and Windows USA
 - DW Macros
 - Skylights
 - Library Part Maker

6.2. Bugfixes, small changes

- Doors and Windows
- Doors and Windows SWE
- Doors and Windows JPN

6.3. Only translation and localization changes

- 2D Elements CZE
- 2D Symbols SWE
- Accessories Library
- Additional Surface Catalog
- Annotation CHI
- Annotation CZE
- Annotation DACH
- Annotation Elements
- Annotation JPN
- Annotation KOR
- Annotation NOR
- Annotation RUS
- Annotation SWE
- Annotation USA
- Appliances
- Basic Shapes and Special Constructions
- Beds
- Cabinets and Shelves
- Chairs
- Chimneys and Fireplaces
- Classical Architectural Elements

Concrete Structures
Connectors
Couches and Sofas
Curtain Wall
Decoration
DIN 2D Symbols
Electric Symbols SWE
Electric Symbols
Electrical Equipments JPN
Escape and Rescue Symbols, Safety Notes
Essential Library
Fire Protection
Furniture Layouts JPN
Furniture Layouts
Furniture Macros
Furniture SWE
GHS Hazard Pictograms
Graphic Symbols
Heating and Air-Conditioning
Japanese Architecture
Kitchen
Light Sources
Medical Equipment
MEP Library
NS 3925 Escape Plans
NS-ISO 6309 Warning Signs
NS-ISO 6790 Symbols
Object Macros
Office and School Equipment
On-Site Renewable Systems
Opening Symbols
People
Plants and Outdoor Accessories
Plumbing Fixtures and Bathroom
Road Signs JPN
Roof Constructions
Sport and wellness
Stair and Railing
Steel Constructions
Sun Protection
Surface Catalog
Tables
Transportation and Parking
Turning Curves CHE
Turning Curves
Vertical Transportation Structures
Wall Ends and Wall Structures
Wall Extras
Wood Trusses

Please note that if you manually update to Library Update 2 instead of using the installer, then if you update the DW Macros package to LU2, the following packages will work correctly only if they are also from LU2:

Doors and Windows
Doors and Windows SWE
Doors and Windows DACH
Doors and Windows USA
Doors and Windows JPN
DW Macros
Skylights
Library Part Maker